

Name \_\_\_\_\_

Date \_\_\_\_\_

## Articulation and Dynamic Matching

Directions: Draw a line matching the definition to the correct name and image.

1) Short, Separated

2) Medium Loud

3) Strong Front to Note

4) Loud

5) Medium Quiet

6) Smooth, Hold for full value

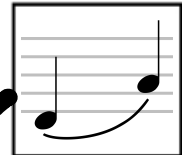
7) Quiet

8) Connected, no space between notes

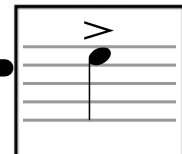
Mezzo Forte



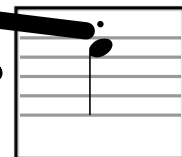
Slur



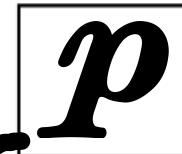
Accent



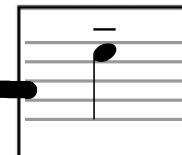
Staccato



Piano



Legato



Mezzo Piano



Forte

